

Futsal Abbreviated Rules Fall 2019

Kickoff

- The ball must go forward. If the ball does not go forward, or if a person is encroaching, there will be a re-kick.
- A goal may be scored directly from kickoff.
- A “coin toss” shall determine which team will start with the ball.

The Match

- The match shall last two equal periods of 15 minutes, clock will be stopped in the last 60 seconds of the second half if the score is within two (2) goals.
- Halftime will be 60 seconds

The Players

- A team consists of a total of five (5) players; four (4) court-players and one (1) goalkeeper.
- Each team must have at least three (3) players present to begin play; two (2) court-players and one (1) goalkeeper or three (3) court-players. Should a team be reduced below the minimum of three (3) playable participants at anytime during the play, the game will be defaulted. Any person can be goalkeeper.
 - In **CoRec play** assuming a team consists of the complete five (5) players: it needs to be a 3:2 ratio, with NO restriction on where they play/who is a court player. The goalkeeper can be either gender.

NOTE: Should a team be forced to play shorthanded, at no time may the number of court players of one gender exceed the number of court players of the opposite gender by more than two. Legal ratios are 3:2, 3:1, 2:2, and 2:1.

Equipment

- The Rec Sports Office will provide one ball for each game.
- All players are responsible for providing their own jerseys.
 - Home team will wear white; Away team will wear dark.

Scoring

- A goal will be called when the whole of the ball has **completely** passed over the goal line, between the goal posts and under the crossbar (except by illegal means).
- You cannot score directly on a kickoff. Should this happen, possession will be given to the other team, at the center mark.

Offside

- There is no offside rule for Rec Sports Futsal

Kick-Ins

- The ball shall be deemed out of play when:
 - It completely crosses the goal line or touch line, whether along the ground or through the air
 - Play has been stopped by the referees
 - It hits the ceiling or overhead obstruction
- All balls played out of bounds from the sidelines are kick-ins. The ball must be settled and on the line. The absolute best way to ensure this happens is for the players to pick up the ball and place it on the line. If the ball rolls slightly due to the unevenness of the floor, the referee will not whistle this as a foul. The restart for a violation is an indirect kick for the other team.

Corner Kicks

- A goal may be scored directly from a corner kick.
- A corner kick shall be awarded when:
 - The whole of the ball, having last touched a player of the defending team, crosses the goal line either along the ground or through the air, and a goal is not scored
- The ball shall be placed on the corner. There is no corner arc.
- The opponents shall remain at least five yards away from the corner until the ball is in play
- The kicker may not play the ball a second time until it has touched another player

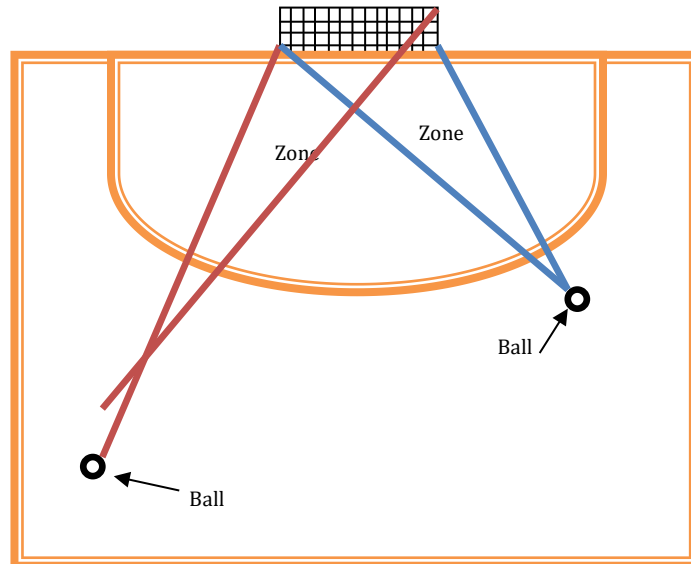
Slide Tackles

- ARE NOT PERMITTED in any form. Should a player slide during play, a direct free kick will be called from the point of infraction.
- Violation inside the penalty arc will result in a penalty kick, and a foul counted towards the "Accumulated Foul Total".

Accumulated Fouls

- Once a team has accumulated 4 fouls during a half (those accumulated in the second half continue to accumulate into extra time);
from the 5th foul:
 - that team shall not be allowed a defensive wall
 - all free kicks shall be direct (no indirect free kicks)
- When a team is no longer allowed to form a wall, they shall not be allowed to have any defensive field players (this does not include the goal keeper) in the 'zone' between the ball and the goal.
- The defensive player is only allowed to enter the zone:

- After the kick has been taken
- To follow an offensive player into the zone to defend them.
- The number of defensive players in the zone cannot exceed the number of offensive players in the zone at any time during the taking of the kick



Direct free kicks

- All opponents shall be situated at least five yards from the ball until it is in play; the ball shall be deemed in play after it has been touched or played
- The players of the opposing team may form a wall to defend a free kick (unless they have four “accumulated fouls”)
- A goal may be scored directly in the opponents’ goal from this free kick
- For offenses warranting a direct free kick please see Official Rules

Indirect free kicks

- A goal shall only be awarded if the ball touches another player before it enters the goal
- For offenses warranting an indirect free kick please see Official Rules

Penalty Kick

- A penalty kick is awarded against a team that commits any of the infringements for which a direct free kick is awarded inside its own penalty area and while the ball is in play.

Substitution Rules

- Players must be COMPLETELY OFF the court before substitutes may come into the field of play. A verbal warning will be given. If, in the opinion of the referee, the team

is making no effort to abide by this rule, the player(s) coming on the field will be cautioned.

- Penalty for an illegal substitution shall be an Indirect Free Kick from the location of the ball at the time of the infraction.

Goal Clearances

- If the ball goes out the end line, the Keeper must distribute the ball by throwing, rolling, or placing it on the ground and kicking it in. It cannot be touched before it clears the keeper arc.
- The keeper must distribute the ball within 4 seconds.
- Balls played from the field, (from an opponent to the keeper), may be picked up then thrown, rolled, or kicked. Note: All outdoor rules apply regarding pass backs to the keeper.
- The ball shall be distributed from any point inside the penalty area by the goalkeeper of the defending team
- Opponents shall remain outside the penalty area until the ball is in play
- The goalkeeper may not play the ball a second time until it has been touched by an opponent or has crossed the halfway line
- The Keeper is not allowed to dribble the ball into play.
- The ball shall be deemed in play when it is thrown directly out of the penalty area
 - NOTE: If the ball is thrown or rolled, it must touch a player before crossing the halfway line. If the ball is kicked this restriction does not apply.
 -

The Half Court Playback Rule

- Once a keeper has thrown the ball in, it may not be played back to him, (this means he can't kick it or touch it), until one of the following has occurred:
 - The ball has been touched by an opponent.
 - It has traveled past half court.
- If the keeper plays the ball in any manner, the result will be an indirect kick from the point of the infraction.

Tie Break Procedures During Regular Season.

- A penalty kick shootout with 3 players from each team shall determine the winner during a regular season tie.
- See Official Rules for Shootout procedures.

Tie Break Procedures During Playoffs

- A 2 minute, running-clock, golden goal overtime period will be played
- If the game is still tied after the overtime period a penalty kick shootout with 5 players from each team shall determine the winner during a playoff tie.
- See Official Rules for Overtime & Shootout procedures.